

FLATWORK DRYER IRONERS

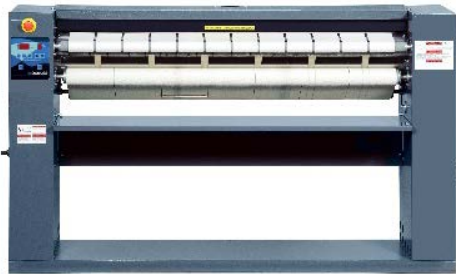


FLATWORK DRYER IRONERS

INDEX

- 1.- Product range - Overview
- 2.- Classification
- 3.- Main features
- 4.- Accessories and Options
- 5.- Technical data
- 6.- Sales arguments and marketing tools

FLATWORK DRYER IRONERS



Sécheuse repasseuse
ø 200 mm - MICRAII



Sécheuses repasseuses
ø 325 mm - DII



Sécheuses repasseuses
ø 500 mm - MIII

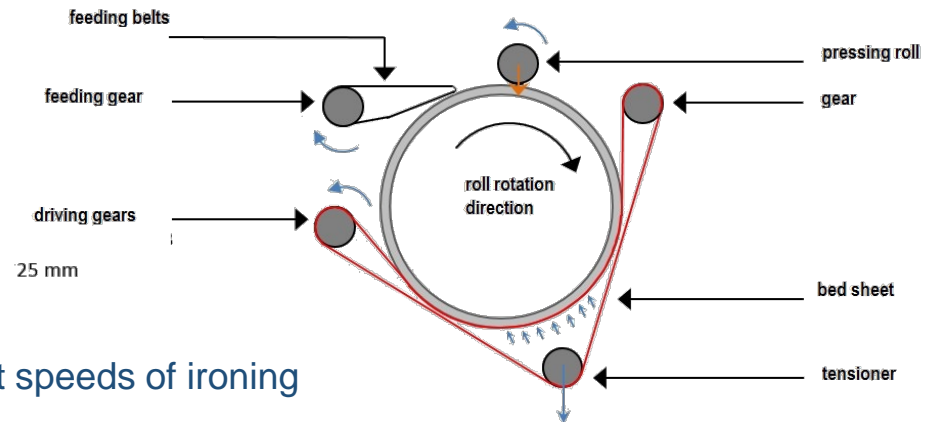
1. PRODUCT RANGE - OVERVIEW

Model		MIII 2000	MIII 2600	MIII 3300
Working width	<i>new</i> M	2 m	2,6 m	3,30 m
Roll diameter	Mm	500	500	500
Heating	Electric	Yes	Yes	Yes
	Steam	Yes	Yes	Yes
	Gas	Yes	Yes	Yes



1. PRODUCT RANGE - OVERVIEW

- Dries and irons in a single operation
- Front feeding and exit of the linen
- Electric, steam or gas heated
- “Easy Control” microprocessor, 7 preset speeds of ironing
- Single roll ø 500 mm in polished steel
- 3 available working widths 2 m, 2m60 and 3m30
- Motor with speed inverter,
- Designed to meet the requirements of hotels, healthcare institutions, nursing homes and on-premises laundries

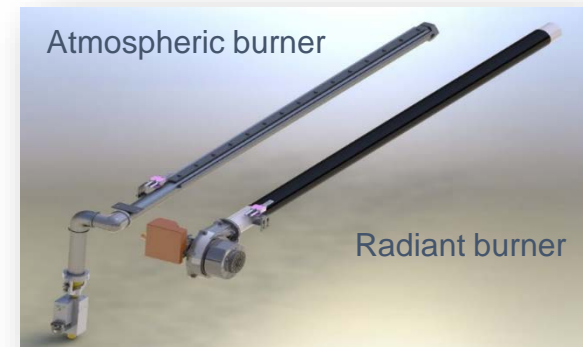
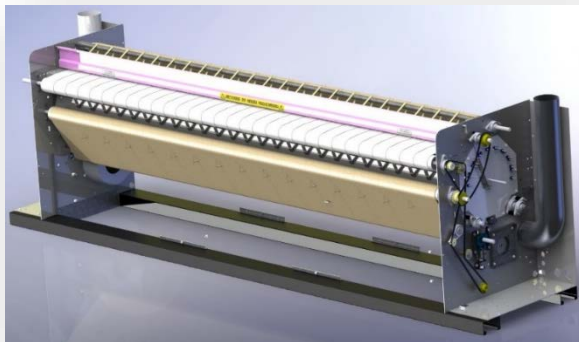


2. CLASSIFICATION

2.1 HEATING:

3 heating modes are available:

- **Electric heating [E]:** by several heating elements mounted on a crate (9 by model 2000, 18 by models 2600 and 3300)
- **Gas heating [G]:** a rail extending over the whole length of the machine allows homogeneous heating from one end to the other
 - **Model with atmospheric burner**
 - **NEW model with radiant burner**
- **Steam heating [S]:** by the release of pressurized steam into a double cylinder connected by a rotating connector at each end



2. CLASSIFICATION

2.1 HEATING: **NEW** Model with radiant burner

Advantages:

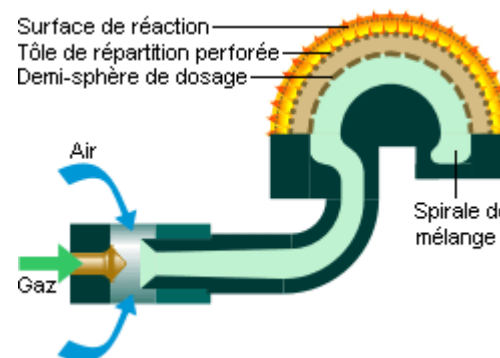
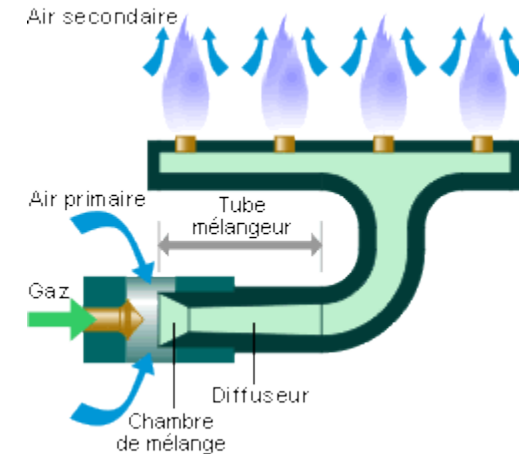
- At similar gas consumption **the hourly output of the ironer is increased by 25 %** compared to a gas heated machine with atmospheric burner
- At similar hourly output **the gas consumption of the ironer is reduced by 25 %** compared to a machine with atmospheric gas burner.

Time and energy savings

- Radiant burners can be used in high altitude places without problem of oxygen level disturbing the flames.

Flexibility and easy to use

Principle of atmospheric burner



Principle of radiant burner

3. MAIN FEATURES

3.1 CONSTRUCTION :

- Chassis consisting of 2 stainless steel plate, front and side panels in stainless steel
- Single roll ø 500 mm in polished steel providing a very smooth contact with the laundry
- Feeding and Ironing by Nomex-polyester belts



3.2 EXHAUST:

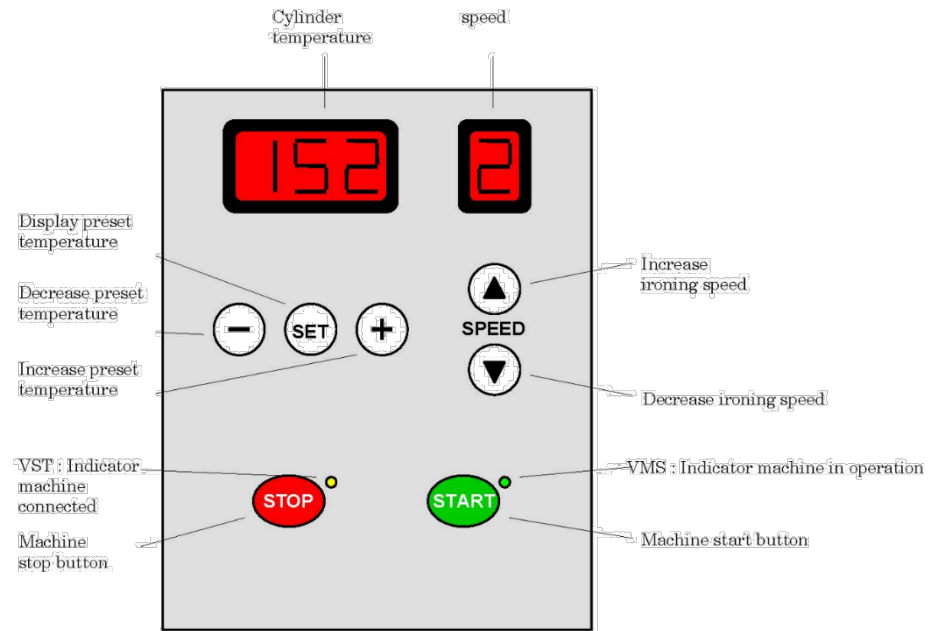
- By 2 silent powerful fans (1 by steam and electric MIII2000)

3. MAIN FEATURES

3.3 CONTROL:

Controlled by the “Easy Control” microprocessor

- 7 preset speeds can be selected according to the type and thickness of the linen
- Display of the temperature and speed



3. MAIN FEATURES

3.4.- SAFETY DEVICES

- Gas heating system:
 - ✓ When a default occurs in the gas system, the gas input is interrupted and alarm AL6 appears to avoid any risk of fire
- Extraction defect:
 - ✓ if a default occurs in the extraction system, the AL1 alarm is displaying



Gas pressure switch

3. MAIN FEATURES

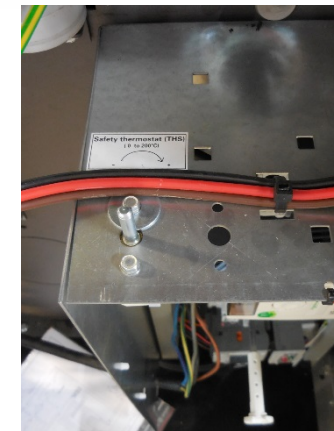
3.4 SAFETY DEVICES:

- **Double emergency stops:**
 - By a plate located just behind the feeding bands
 - By a push-button at the front of the machine

- **Heating protection:**
 - By a temperature probe regulating the roll temperature (185°C max)
 - by safety thermostat (190°C)



Plate safety device



Thermic safety device

3. MAIN FEATURES

3.5 INSTALLATION :

The machine only requires:

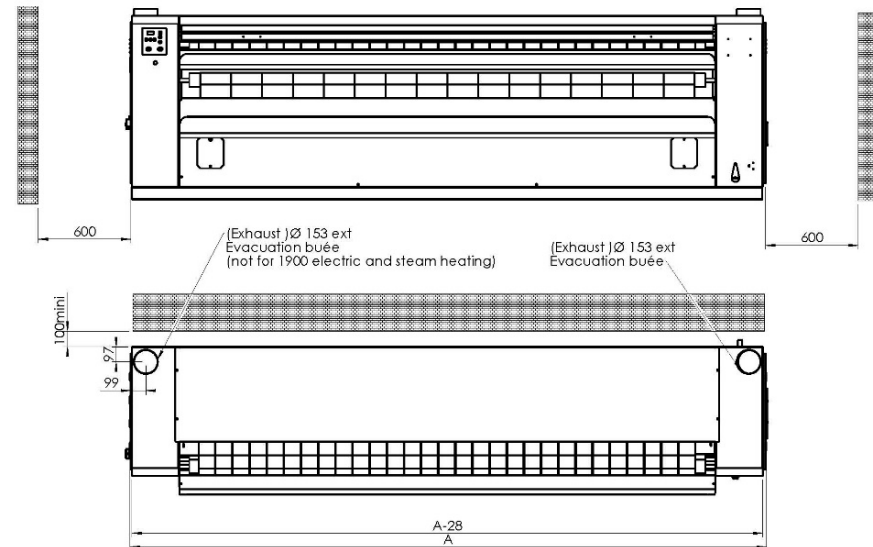
- One electrical connection,
- One connection for the heating system (gas or steam)
- 1 or 2 exhaust chimneys (153 mm)

3.6 DIMENSIONS :

- 836 mm wide by removing the trays which allows the passage through most of the doors.

3.7 VOLTAGE

- 400V III



3. MAIN FEATURES

3.8 CERTIFICATES

- CE Standards
- ETL Authorization to mark (US) No 3041359
- CSA US No 1334884 for gas heated appliances
- CERTIGAZ CE No 1312AU2903 for gas heated appliances
- ISO 9001/2008 quality certificate No 200304647



4. ACCESSORIES AND OPTIONS

- Chrome plate cylinder: prevents corrosion
- SMART system: automatic regulation of the ironing speed according to the residual moisture of the linen : energy economizer and improved productivity
- Reversing roll
- Voltage 230V/50-60/3, marine voltage 440V/60/3 and 440V/50/3



Régulation vitesse
du cylindre en
fonction de l'humidité

5. TECHNICAL DATA

MODEL	MIII 2000	MIII 2600	MIII 3300
Roll ø mm	500	500	500
Working width	2 m	2m60	3m30
Heating Surface (m ²)	3,14	4,08	5,18
Output (kg/h)	50/70	60/80	80/120
DIMENSIONS			
Width (mm)	2810	3420	4120
Depth (mm)	956	956	956
Height (mm)	1190	1190	1190
Net weight (Kg)	925	1200	1436
Height of loading (feeding bands) - mm	1023	1023	1023
POWER			
Roll Motor (Kw)	0,37	0,37	0,37
Fan motor (Kw)	0,25	0,25 (x2)	0,25 (x2)
Heating (Kw) (Electric model)	31,5	40,5	54
Max. power (Kw) (Electric model)	32,12	41,37	54,87
Max. power (Kw) (Steam / gas model)	0,62 (0,87 gas)	0,87	0,87
CONNECTIONS			
Gas inlet	1"	1"	1"
Steam inlet	3/4"	3/4"	3/4"
Condensed return	1/2"	1/2"	1/2"
GENERAL DETAILS			
Exhaust No	1 (2x gas)	2	2
Exhaust ø – mm	153	153	153
Extraction power m ³ /h	600 (1200 gas)	1200	1200
Ironing speed m/min	1-8	1-8	1-8
Water evaporation lt/h	35-49	42-56	56-84
Rear exit	NO	NO	NO

6. SALES ARGUMENTS



Inox

Stainless steel panels and round corners for better ergonomics and improved hygiene (complies with RABC standard)



Inverter

Motor with speed inverter providing a gradual acceleration and driving 7 preset ironing speeds



Installation et maintenance aisées

Easy to install, minimal encumbrance (width 836 mm without trays)



Programmeur électronique

User's friendly and easy to use. Automatic regulation of the ironing speed and temperature by digital touch



Rafroidissement progressif

When shutting down beyond 80°C the temperature gradually decreases until the machine stops to preserve the bands

6. SALES ARGUMENTS



Régulation vitesse
du cylindre en
fonction de l'humidité

Option: automatic regulation of the ironing speed adjusted to the residual moisture of the linen : saving energy and time, increasing productivity



Option: chromed plate cylinder, more efficient and durable



Option: radiant burner, quick to heat up, more efficient, it increases the output by gas heated model up to 25 %

